

BOSTO

Quick Guide

BT-13HD Series



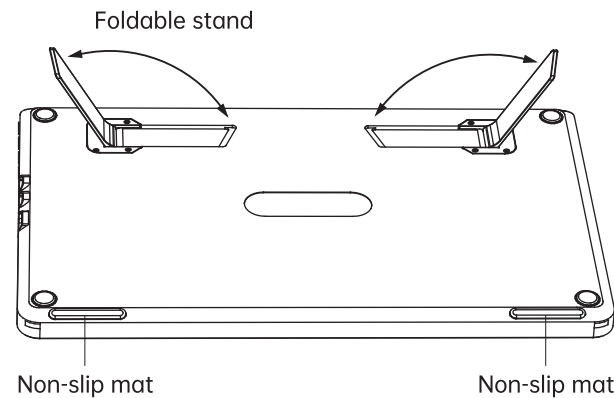
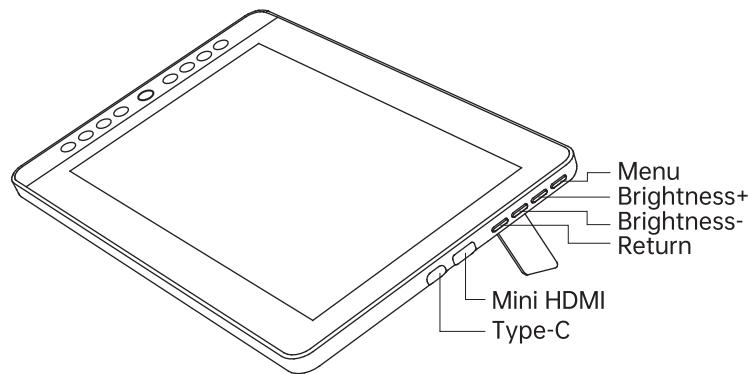
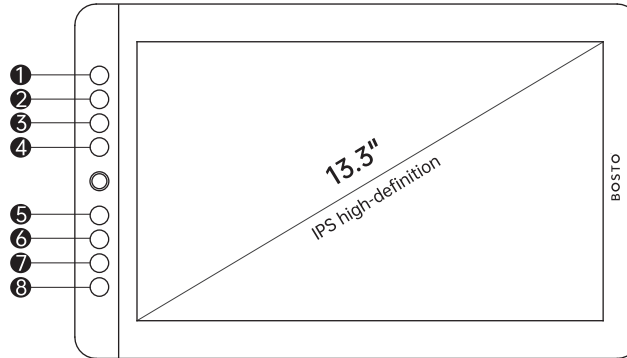
Welcome to buy BOSTO graphic drawing tablet!

Dear customers :

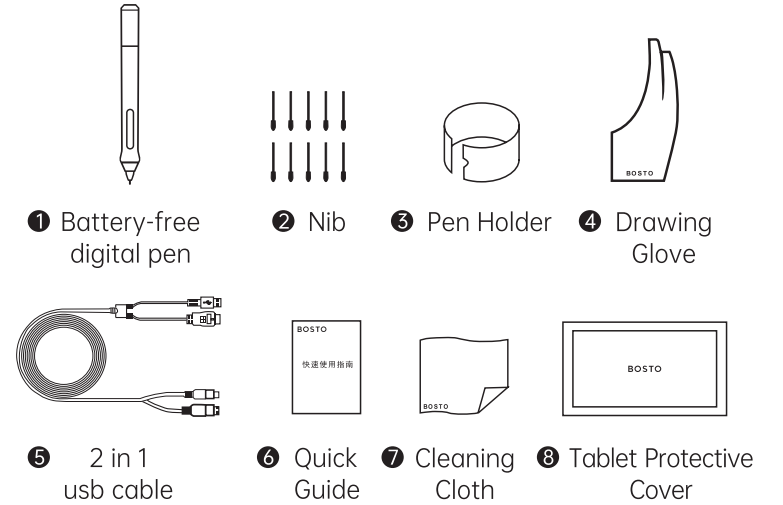
Thank you for your trust and support of BOSTO brand, we will serve you wholeheartedly, please feel free to contact us if you have any questions during the use.

1 OVERVIEW

- 1 Brush Size +
- 2 Brush Size -
- 3 Canvas Zoom In
- 4 Canvas Zoom out
- 5 Hand
- 6 Save
- 7 Undo
- 8 Redo

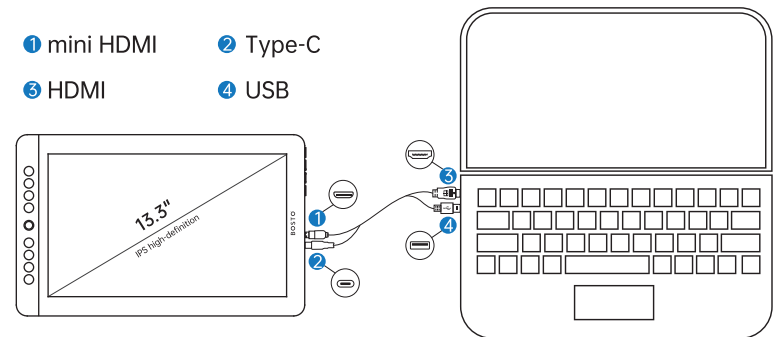


2 ACCESSORIES



3 CONNECTION

Connect your BOSTO tablet with the computer as shown :

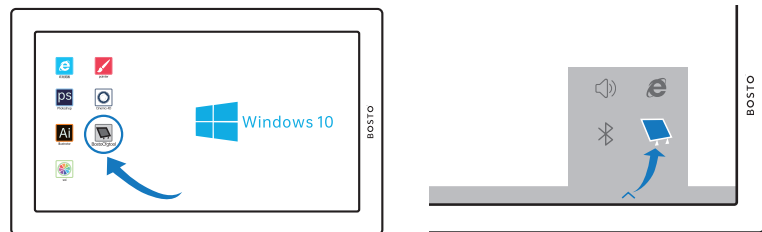


4 DRIVER INSTALLATION

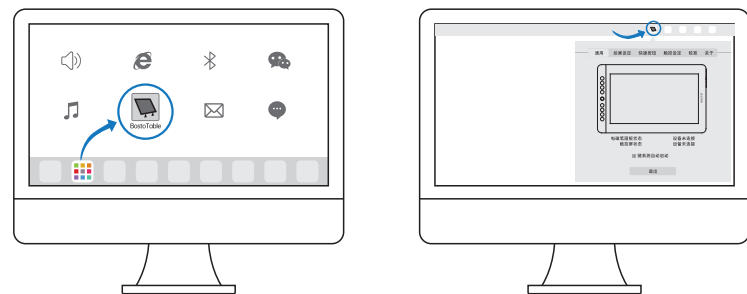
1. Preparation before installation : Uninstall and remove other graphic tablet/monitor driver installed in your computer, quit all running programs, disable any anti-virus software and firewall temporarily, Installing the driver as administrator.
2. Download the driver from: <http://www.bostotablet.com/download.aspx>

3. After a successful installation

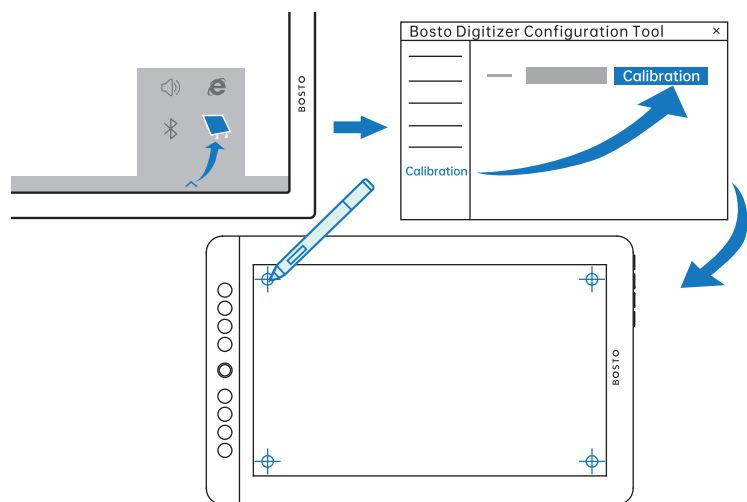
- Windows: You can find the "Bosto Digitizer" Icon on the desktop or task bar bottom right corner of your computer.



- Mac: You can find "Bosto Tablet" Icon in the "Launchpad", after click it, you will see the small icon on the top right navigation bar (as shown in the picture below), click to open the driver settings panel.

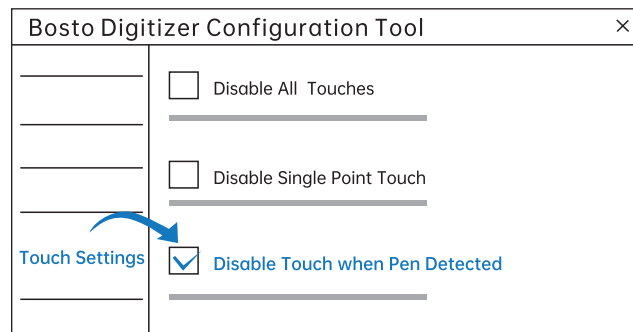


5 SCREEN CALIBRATION



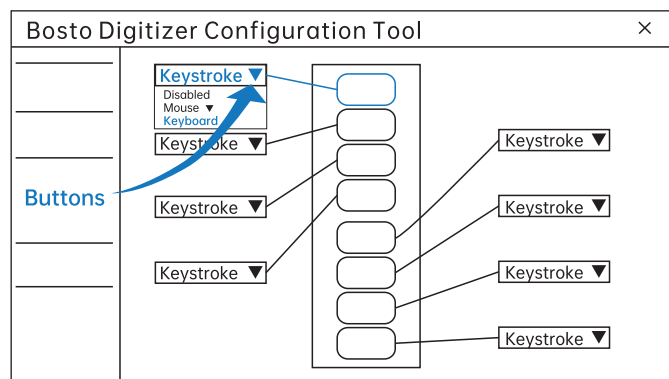
6 FINGER-TOUCH SETTINGS

(Only for 13HDK-T)



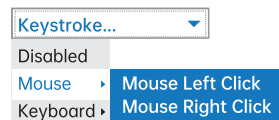
Note: select the "Disable single point touch" can greatly reduce false operation

7 SET THE KEYS

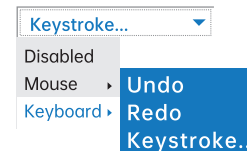


Note: Shortcut keys can be customized

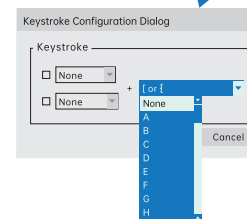
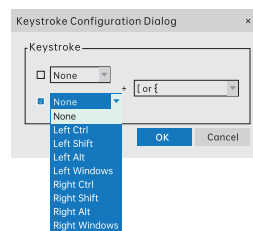
Set to left and right mouse buttons:



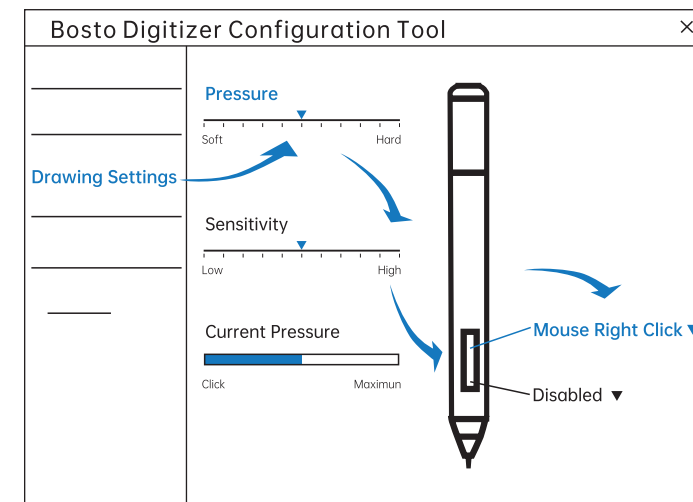
Set as keyboard key:



Set as key combination:



8 SET UP THE PRESSURE SENSITIVE PEN



Pressure adjustment: drawing the Minimum pen pressure of lines
Move the slider to the right, more pressure required for drawing the lines

Sensitivity adjustment: when drawing, the change ranges of the thickness for the corresponding lines, Move the slider to the right, the line is thicker for the same pressure.

9 REPLACE PEN NIB



ShenZhen Bosto Technology Co., Ltd.

National Service Hotline: 0755-29691514 Email: fanly@bostotablet.com
 QQ: 2402578413 Website: www.bostotablet.com
 Address: 2nd Floor, Building B, Rongfeng Science and Technology Park, No. 9 Fuxing Road, Chang'an Town, Dongguan City, Guangdong Province, China,523859

